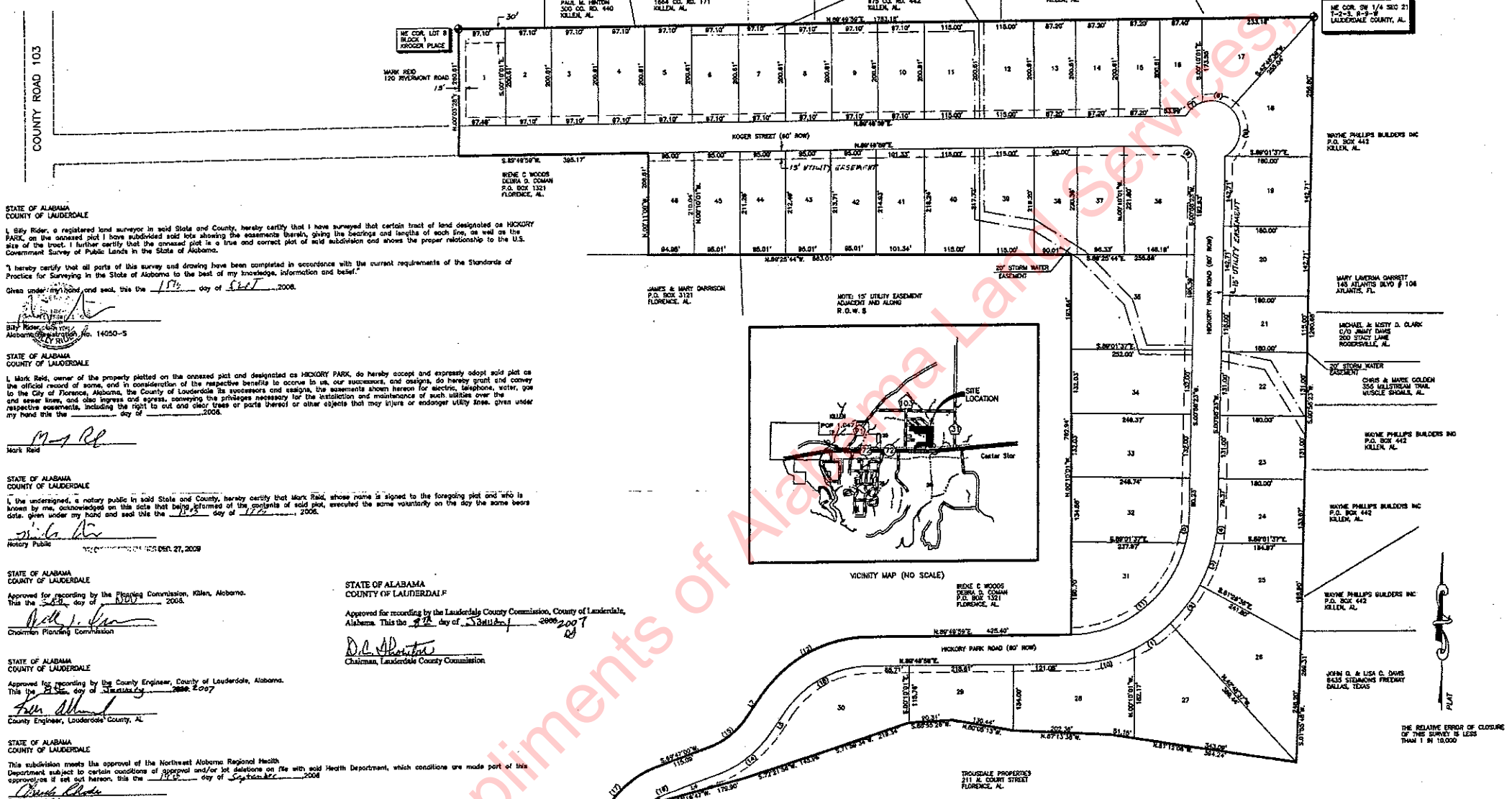


HICKORY PARK LAUDERDALE COUNTY ALABAMA

MARK REID: DEVELOPER

124



STATE OF ALABAMA
COUNTY OF LAUDERDALE

I, Mark Reid, a registered land surveyor in said State and County, hereby certify that I have surveyed that certain tract of land designated as HICKORY PARK, on the annexed plat I have subdivided said lots showing the easements herein, giving the bearings and lengths of each line, as well as the size of the tract. I further certify that the annexed plat is a true and correct plot of said subdivision and shows the proper relationship to the U.S. Government Survey of Public Lands in the State of Alabama.

I hereby certify that all parts of this survey and drawing have been completed in accordance with the current requirements of the Standards of Practice for Surveying in the State of Alabama to the best of my knowledge, information and belief.

Given under my hand and seal, this the 11th day of Sept, 2008.

Mark Reid
Alabama Registration No. 14050-S

STATE OF ALABAMA
COUNTY OF LAUDERDALE

I, Mark Reid, owner of the property platted on the annexed plat and designated as HICKORY PARK, do hereby accept and expressly adopt said plat as the official record of same, and in consideration of the respective benefits to occur to us, our successors, and assigns, do hereby grant and convey to the City of Florence, Alabama, the County of Lauderdale its assessors and assigns, the easements shown hereon for electric, telephone, water, gas and sewer lines, and also ingress and egress, conveying the privileges necessary for the installation and maintenance of such utilities over the respective easements, including the right to cut and clear trees or parts thereof or other objects that may injure or endanger utility lines, given under my hand this the 11th day of Sept, 2008.

STATE OF ALABAMA
COUNTY OF LAUDERDALE

I, the undersigned, a notary public in said State and County, hereby certify that Mark Reid, whose name is signed to the foregoing plat and who is known by me, acknowledged on this date that being informed of the contents of said plat, executed the same voluntarily on the day the same bears date, given under my hand and seal this the 11th day of Sept, 2008.

STATE OF ALABAMA
COUNTY OF LAUDERDALE

Approved for recording by the Planning Commission, Kellen, Alabama.
This the 11th day of Sept, 2008.

Chairman Planning Commission

STATE OF ALABAMA
COUNTY OF LAUDERDALE

Approved for recording by the County Engineer, County of Lauderdale, Alabama.
This the 11th day of Sept, 2008.

County Engineer, Lauderdale County, AL

STATE OF ALABAMA
COUNTY OF LAUDERDALE

This subdivision meets the approval of the Northwest Alabama Regional Health Department subject to certain conditions of approval and/or lot delineations on file with said Health Department, which conditions are made part of this approval as set out hereon, this the 11th day of Sept, 2008.

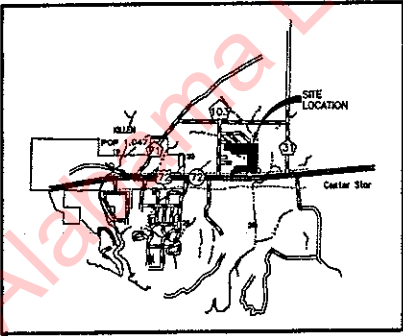
STATE OF ALABAMA
COUNTY OF LAUDERDALE

I, Dewey Mitchell, Probate Judge, Lauderdale County, Alabama, hereby certify that the attached plat of HICKORY PARK, was duly filed in the Office of the Judge of Probate of Lauderdale County, Alabama in Plat Book 111 Page 212 This the 11th day of Sept, 2008.

STATE OF ALABAMA
COUNTY OF LAUDERDALE

Approved for recording by the Lauderdale County Commission, County of Lauderdale, Alabama. This the 11th day of Sept, 2008.

Chairman, Lauderdale County Commission



LINE TABLE

Line	Bearing	Distance
1	S.89°44'50"W	368.17
2	S.89°44'50"W	368.17
3	S.89°44'50"W	368.17
4	S.89°44'50"W	368.17
5	S.89°44'50"W	368.17
6	S.89°44'50"W	368.17
7	S.89°44'50"W	368.17
8	S.89°44'50"W	368.17
9	S.89°44'50"W	368.17
10	S.89°44'50"W	368.17
11	S.89°44'50"W	368.17
12	S.89°44'50"W	368.17
13	S.89°44'50"W	368.17
14	S.89°44'50"W	368.17
15	S.89°44'50"W	368.17
16	S.89°44'50"W	368.17
17	S.89°44'50"W	368.17
18	S.89°44'50"W	368.17
19	S.89°44'50"W	368.17
20	S.89°44'50"W	368.17
21	S.89°44'50"W	368.17
22	S.89°44'50"W	368.17
23	S.89°44'50"W	368.17
24	S.89°44'50"W	368.17
25	S.89°44'50"W	368.17
26	S.89°44'50"W	368.17
27	S.89°44'50"W	368.17
28	S.89°44'50"W	368.17
29	S.89°44'50"W	368.17
30	S.89°44'50"W	368.17
31	S.89°44'50"W	368.17
32	S.89°44'50"W	368.17
33	S.89°44'50"W	368.17
34	S.89°44'50"W	368.17
35	S.89°44'50"W	368.17
36	S.89°44'50"W	368.17
37	S.89°44'50"W	368.17
38	S.89°44'50"W	368.17

CURVE TABLE

Sta.	Radius	Delta	Tangent	Chord	Chord Bearing
10+00	100.00	180.00	0.00	0.00	S.00°00'00"W
10+10	100.00	180.00	0.00	0.00	S.00°00'00"W
10+20	100.00	180.00	0.00	0.00	S.00°00'00"W
10+30	100.00	180.00	0.00	0.00	S.00°00'00"W
10+40	100.00	180.00	0.00	0.00	S.00°00'00"W
10+50	100.00	180.00	0.00	0.00	S.00°00'00"W
10+60	100.00	180.00	0.00	0.00	S.00°00'00"W
10+70	100.00	180.00	0.00	0.00	S.00°00'00"W
10+80	100.00	180.00	0.00	0.00	S.00°00'00"W
10+90	100.00	180.00	0.00	0.00	S.00°00'00"W
11+00	100.00	180.00	0.00	0.00	S.00°00'00"W
11+10	100.00	180.00	0.00	0.00	S.00°00'00"W
11+20	100.00	180.00	0.00	0.00	S.00°00'00"W
11+30	100.00	180.00	0.00	0.00	S.00°00'00"W
11+40	100.00	180.00	0.00	0.00	S.00°00'00"W
11+50	100.00	180.00	0.00	0.00	S.00°00'00"W
11+60	100.00	180.00	0.00	0.00	S.00°00'00"W
11+70	100.00	180.00	0.00	0.00	S.00°00'00"W
11+80	100.00	180.00	0.00	0.00	S.00°00'00"W
11+90	100.00	180.00	0.00	0.00	S.00°00'00"W
12+00	100.00	180.00	0.00	0.00	S.00°00'00"W

**HICKORY PARK
LAUDERDALE COUNTY, ALABAMA**

PRICE & RIDER ENGINEERING, INC.
CIVIL ENGINEERS & LAND SURVEYORS
228 WEST TENNESSEE STREET FLORENCE, ALABAMA
(256) 798-8974

DRAWN BY: BM DATE: 10/24/08 SHEET: _____
CHECKED BY: R.E. SCALE: 1"=100' _____
FILE NAME: 06-080PLAT REVISIONS: 9/19/06 (BM) _____
OF _____ SHEETS

HIGHWAY # 72