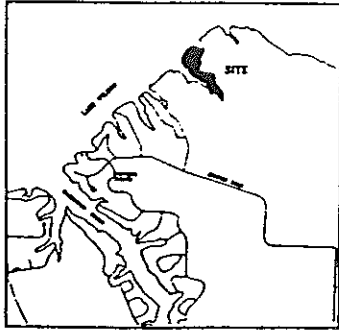


STATE OF ALA. COLBERT CO.  
IDENTIFY THIS INSTRUMENT  
WITH FILED # 97

9703 837

97 FEB 10 PM 2:51

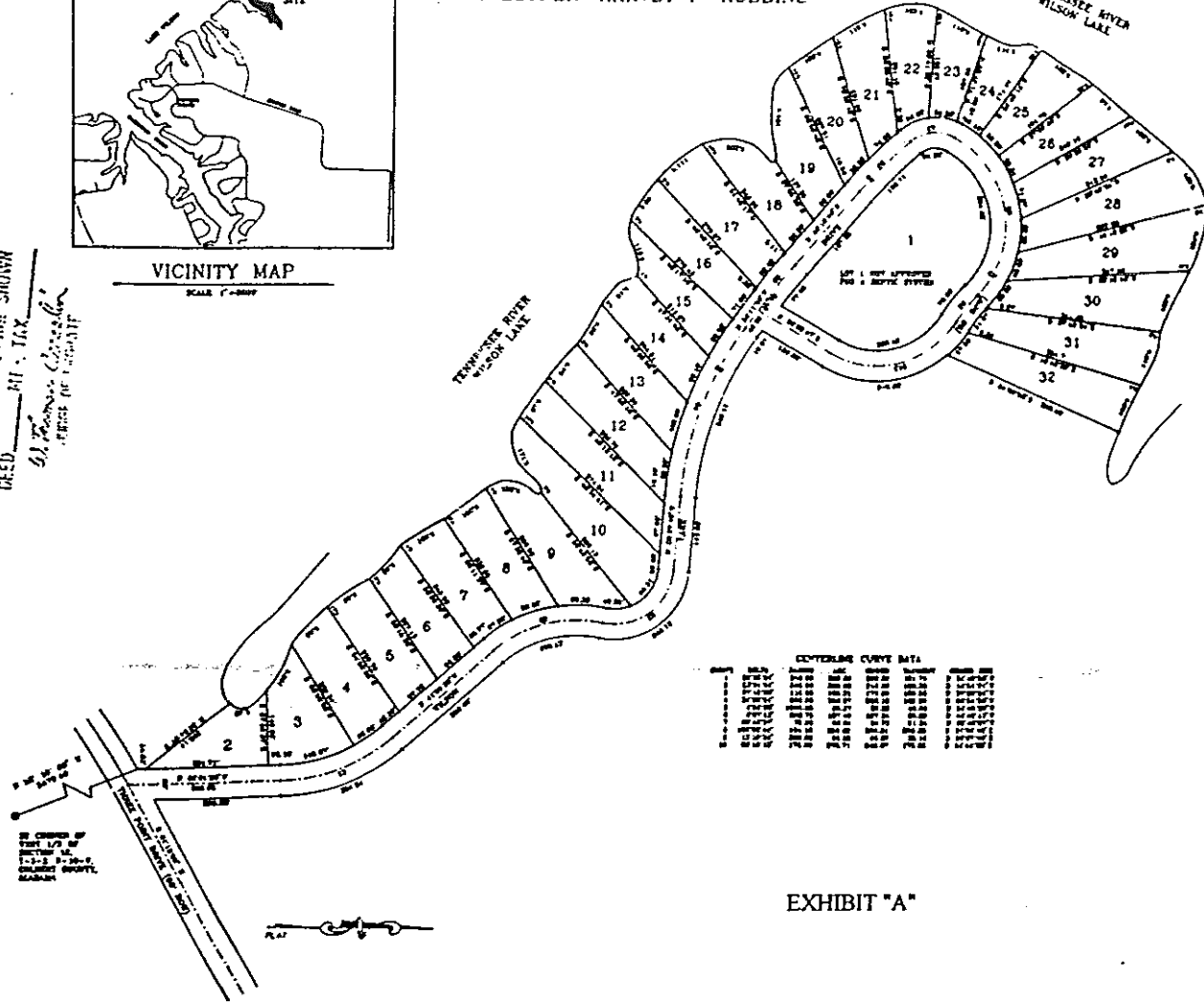
RECORDED BY PAGE SHOWN  
INDEXED BY TAX  
BY *Shirley C. ...*  
INDEXED BY TAX



VICINITY MAP

### HUNTER POINT II

COLBERT COUNTY, ALABAMA  
DEVELOPER HARVEY F. ROBBINS



CONTROLLING CURVE DATA

1	2	3	4	5	6	7	8	9	10	11	12	13	14	15	16	17	18	19	20	21	22	23	24	25	26	27	28	29	30	31	32		
...	...	...	...	...	...	...	...	...	...	...	...	...	...	...	...	...	...	...	...	...	...	...	...	...	...	...	...	...	...	...	...	...	...

EXHIBIT "A"

Part of Section  
City of ...  
I, the undersigned, being duly qualified to sell these and being duly sworn, do hereby certify that the foregoing is a true and correct copy of the original as shown to me by the County Clerk of Colbert County, Alabama. I have personally read and examined the original and find that it is a true and correct copy of the original as shown to me by the County Clerk of Colbert County, Alabama.



9703

I, the undersigned, being duly qualified to sell these and being duly sworn, do hereby certify that the foregoing is a true and correct copy of the original as shown to me by the County Clerk of Colbert County, Alabama. I have personally read and examined the original and find that it is a true and correct copy of the original as shown to me by the County Clerk of Colbert County, Alabama.

Notary Public  
State of Alabama

Part of Section  
City of ...  
I, the undersigned, being duly qualified to sell these and being duly sworn, do hereby certify that the foregoing is a true and correct copy of the original as shown to me by the County Clerk of Colbert County, Alabama. I have personally read and examined the original and find that it is a true and correct copy of the original as shown to me by the County Clerk of Colbert County, Alabama.

Notary Public  
State of Alabama

Part of Section  
City of ...  
I, the undersigned, being duly qualified to sell these and being duly sworn, do hereby certify that the foregoing is a true and correct copy of the original as shown to me by the County Clerk of Colbert County, Alabama. I have personally read and examined the original and find that it is a true and correct copy of the original as shown to me by the County Clerk of Colbert County, Alabama.

Notary Public  
State of Alabama

**PATTON, PRICE & ROSS ENGINEERING, INC.**  
P.O. BOX 1000, COLBERT COUNTY, ALABAMA

DATE	97 FEB 10	FILED	9703
BY	SHIRLEY C. ...	INDEXED	...
FILED	...	INDEXED	...