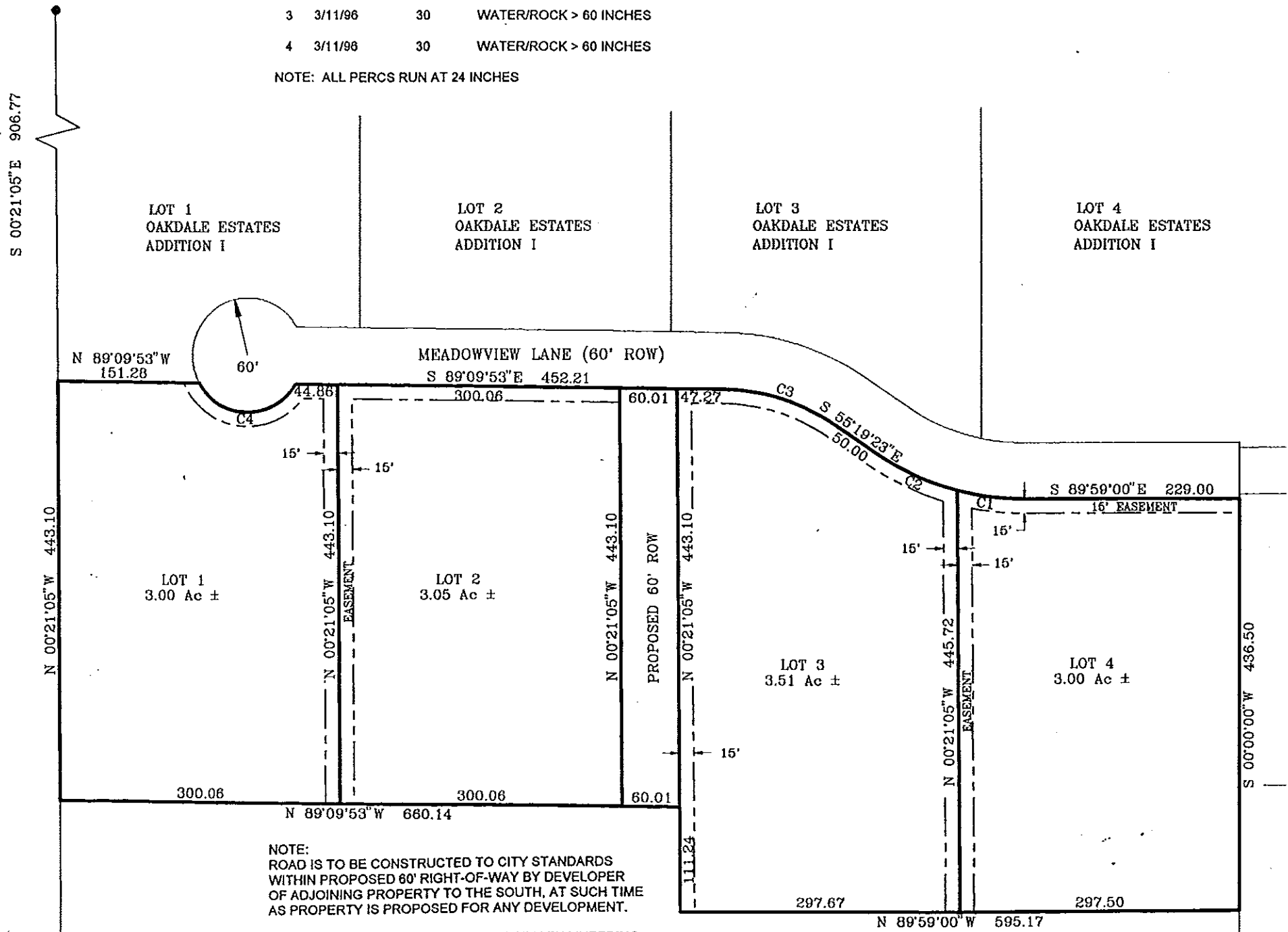


OAKDALE
ESTATES
ADDITION II
6-211

NW CORNER OF SW 1/4
OF NE 1/4 OF SECTION 3,
T-2-S, R-11-W, LAUDERDALE
COUNTY, ALABAMA

NO.	DATE	MIN.	PER INCH
1	3/11/96	30	WATER/ROCK > 60 INCHES
2	3/11/96	30	ROCK > 60 INCHES - WATER AT 50 INCHES
3	3/11/96	30	WATER/ROCK > 60 INCHES
4	3/11/96	30	WATER/ROCK > 60 INCHES

NOTE: ALL PERCS RUN AT 24 INCHES



NOTE:
ROAD IS TO BE CONSTRUCTED TO CITY STANDARDS
WITHIN PROPOSED 60' RIGHT-OF-WAY BY DEVELOPER
OF ADJOINING PROPERTY TO THE SOUTH, AT SUCH TIME
AS PROPERTY IS PROPOSED FOR ANY DEVELOPMENT.

SURETY IS TO BE POSTED WITH THE CITY ENGINEERING
DEPARTMENT PRIOR TO SUBDIVISION OR ISSUANCE OF
BUILDING PERMITS.

