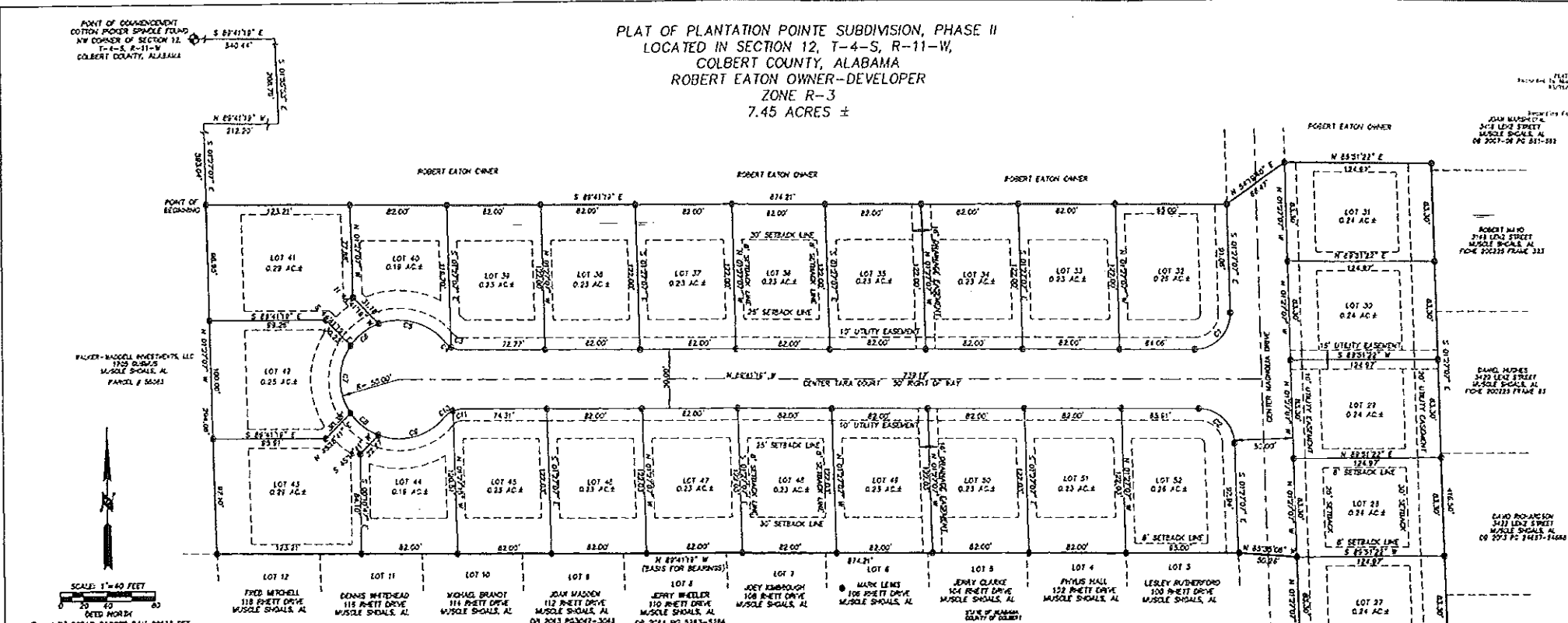


C-191

PLAT OF PLANTATION POINTE SUBDIVISION, PHASE II
 LOCATED IN SECTION 12, T-4-S, R-11-W,
 COLBERT COUNTY, ALABAMA
 ROBERT EATON OWNER-DEVELOPER
 ZONE R-3
 7.45 ACRES ±



SCALE: 1" = 40 FEET
 COUNTY COURTY
 DATED NORTH
 1/2" REBAR CAPPED BAW 20033 SET

CURVE DATA

CHORD #	RADIUS	LENGTH	CHORD BEARING	CHORD DISTANCE
C1	50.00'	48.00'	S 82°41'30" E	48.00'
C2	50.00'	48.00'	S 82°41'30" E	48.00'
C3	50.00'	48.00'	S 82°41'30" E	48.00'
C4	50.00'	48.00'	S 82°41'30" E	48.00'
C5	50.00'	48.00'	S 82°41'30" E	48.00'
C6	50.00'	48.00'	S 82°41'30" E	48.00'
C7	50.00'	48.00'	S 82°41'30" E	48.00'
C8	50.00'	48.00'	S 82°41'30" E	48.00'
C9	50.00'	48.00'	S 82°41'30" E	48.00'
C10	50.00'	48.00'	S 82°41'30" E	48.00'
C11	50.00'	48.00'	S 82°41'30" E	48.00'
C12	50.00'	48.00'	S 82°41'30" E	48.00'
C13	50.00'	48.00'	S 82°41'30" E	48.00'
C14	50.00'	48.00'	S 82°41'30" E	48.00'
C15	50.00'	48.00'	S 82°41'30" E	48.00'
C16	50.00'	48.00'	S 82°41'30" E	48.00'
C17	50.00'	48.00'	S 82°41'30" E	48.00'
C18	50.00'	48.00'	S 82°41'30" E	48.00'
C19	50.00'	48.00'	S 82°41'30" E	48.00'
C20	50.00'	48.00'	S 82°41'30" E	48.00'
C21	50.00'	48.00'	S 82°41'30" E	48.00'
C22	50.00'	48.00'	S 82°41'30" E	48.00'
C23	50.00'	48.00'	S 82°41'30" E	48.00'
C24	50.00'	48.00'	S 82°41'30" E	48.00'
C25	50.00'	48.00'	S 82°41'30" E	48.00'
C26	50.00'	48.00'	S 82°41'30" E	48.00'
C27	50.00'	48.00'	S 82°41'30" E	48.00'
C28	50.00'	48.00'	S 82°41'30" E	48.00'
C29	50.00'	48.00'	S 82°41'30" E	48.00'
C30	50.00'	48.00'	S 82°41'30" E	48.00'
C31	50.00'	48.00'	S 82°41'30" E	48.00'
C32	50.00'	48.00'	S 82°41'30" E	48.00'
C33	50.00'	48.00'	S 82°41'30" E	48.00'
C34	50.00'	48.00'	S 82°41'30" E	48.00'
C35	50.00'	48.00'	S 82°41'30" E	48.00'
C36	50.00'	48.00'	S 82°41'30" E	48.00'
C37	50.00'	48.00'	S 82°41'30" E	48.00'
C38	50.00'	48.00'	S 82°41'30" E	48.00'
C39	50.00'	48.00'	S 82°41'30" E	48.00'
C40	50.00'	48.00'	S 82°41'30" E	48.00'
C41	50.00'	48.00'	S 82°41'30" E	48.00'
C42	50.00'	48.00'	S 82°41'30" E	48.00'
C43	50.00'	48.00'	S 82°41'30" E	48.00'
C44	50.00'	48.00'	S 82°41'30" E	48.00'
C45	50.00'	48.00'	S 82°41'30" E	48.00'
C46	50.00'	48.00'	S 82°41'30" E	48.00'
C47	50.00'	48.00'	S 82°41'30" E	48.00'
C48	50.00'	48.00'	S 82°41'30" E	48.00'
C49	50.00'	48.00'	S 82°41'30" E	48.00'
C50	50.00'	48.00'	S 82°41'30" E	48.00'
C51	50.00'	48.00'	S 82°41'30" E	48.00'
C52	50.00'	48.00'	S 82°41'30" E	48.00'
C53	50.00'	48.00'	S 82°41'30" E	48.00'
C54	50.00'	48.00'	S 82°41'30" E	48.00'
C55	50.00'	48.00'	S 82°41'30" E	48.00'
C56	50.00'	48.00'	S 82°41'30" E	48.00'
C57	50.00'	48.00'	S 82°41'30" E	48.00'
C58	50.00'	48.00'	S 82°41'30" E	48.00'
C59	50.00'	48.00'	S 82°41'30" E	48.00'
C60	50.00'	48.00'	S 82°41'30" E	48.00'
C61	50.00'	48.00'	S 82°41'30" E	48.00'
C62	50.00'	48.00'	S 82°41'30" E	48.00'
C63	50.00'	48.00'	S 82°41'30" E	48.00'
C64	50.00'	48.00'	S 82°41'30" E	48.00'
C65	50.00'	48.00'	S 82°41'30" E	48.00'
C66	50.00'	48.00'	S 82°41'30" E	48.00'
C67	50.00'	48.00'	S 82°41'30" E	48.00'
C68	50.00'	48.00'	S 82°41'30" E	48.00'
C69	50.00'	48.00'	S 82°41'30" E	48.00'
C70	50.00'	48.00'	S 82°41'30" E	48.00'
C71	50.00'	48.00'	S 82°41'30" E	48.00'
C72	50.00'	48.00'	S 82°41'30" E	48.00'
C73	50.00'	48.00'	S 82°41'30" E	48.00'
C74	50.00'	48.00'	S 82°41'30" E	48.00'
C75	50.00'	48.00'	S 82°41'30" E	48.00'
C76	50.00'	48.00'	S 82°41'30" E	48.00'
C77	50.00'	48.00'	S 82°41'30" E	48.00'
C78	50.00'	48.00'	S 82°41'30" E	48.00'
C79	50.00'	48.00'	S 82°41'30" E	48.00'
C80	50.00'	48.00'	S 82°41'30" E	48.00'
C81	50.00'	48.00'	S 82°41'30" E	48.00'
C82	50.00'	48.00'	S 82°41'30" E	48.00'
C83	50.00'	48.00'	S 82°41'30" E	48.00'
C84	50.00'	48.00'	S 82°41'30" E	48.00'
C85	50.00'	48.00'	S 82°41'30" E	48.00'
C86	50.00'	48.00'	S 82°41'30" E	48.00'
C87	50.00'	48.00'	S 82°41'30" E	48.00'
C88	50.00'	48.00'	S 82°41'30" E	48.00'
C89	50.00'	48.00'	S 82°41'30" E	48.00'
C90	50.00'	48.00'	S 82°41'30" E	48.00'
C91	50.00'	48.00'	S 82°41'30" E	48.00'
C92	50.00'	48.00'	S 82°41'30" E	48.00'
C93	50.00'	48.00'	S 82°41'30" E	48.00'
C94	50.00'	48.00'	S 82°41'30" E	48.00'
C95	50.00'	48.00'	S 82°41'30" E	48.00'
C96	50.00'	48.00'	S 82°41'30" E	48.00'
C97	50.00'	48.00'	S 82°41'30" E	48.00'
C98	50.00'	48.00'	S 82°41'30" E	48.00'
C99	50.00'	48.00'	S 82°41'30" E	48.00'
C100	50.00'	48.00'	S 82°41'30" E	48.00'

CERTIFICATE OF APPROVAL OF STREET REFINEMENT
 I hereby certify that the existing and proposed street layout included in the subdivision map submitted to the Planning Commission for PLANTATION POINTE SUBDIVISION PHASE II, or that a preliminary plat of the subdivision of the same, has been approved by the City of Muscle Shoals in accordance with all applicable provisions of the City of Muscle Shoals Code.
 This on the 15th day of January, 2016.
 City Engineer, City of Muscle Shoals, Alabama

CERTIFICATE OF APPROVAL OF ALLEYS AND REAR
 I hereby certify that the alley and rear easements have been included in the subdivision map submitted to the Planning Commission for PLANTATION POINTE SUBDIVISION PHASE II, or that a preliminary plat of the subdivision of the same, has been approved by the City of Muscle Shoals in accordance with all applicable provisions of the City of Muscle Shoals Code.
 This on the 15th day of January, 2016.
 City Engineer, City of Muscle Shoals, Alabama

CERTIFICATE OF APPROVAL OF ELEC. REFINEMENT
 I hereby certify that the electric distribution infrastructure has been included in the subdivision map submitted to the Planning Commission for PLANTATION POINTE SUBDIVISION PHASE II, or that a preliminary plat of the subdivision of the same, has been approved by the City of Muscle Shoals in accordance with all applicable provisions of the City of Muscle Shoals Code.
 This on the 15th day of January, 2016.
 City Engineer, City of Muscle Shoals, Alabama

CERTIFICATE OF APPROVAL OF PLUMBING
 I hereby certify that the plumbing infrastructure has been included in the subdivision map submitted to the Planning Commission for PLANTATION POINTE SUBDIVISION PHASE II, or that a preliminary plat of the subdivision of the same, has been approved by the City of Muscle Shoals in accordance with all applicable provisions of the City of Muscle Shoals Code.
 This on the 15th day of January, 2016.
 City Engineer, City of Muscle Shoals, Alabama

CERTIFICATE OF APPROVAL OF GAS REFINEMENT
 I hereby certify that the gas distribution infrastructure has been included in the subdivision map submitted to the Planning Commission for PLANTATION POINTE SUBDIVISION PHASE II, or that a preliminary plat of the subdivision of the same, has been approved by the City of Muscle Shoals in accordance with all applicable provisions of the City of Muscle Shoals Code.
 This on the 15th day of January, 2016.
 City Engineer, City of Muscle Shoals, Alabama

CERTIFICATE OF CITY ENGINEER
 I hereby certify that the subdivision map for PLANTATION POINTE SUBDIVISION PHASE II, or that a preliminary plat of the subdivision of the same, has been approved by the City of Muscle Shoals in accordance with all applicable provisions of the City of Muscle Shoals Code.
 This on the 15th day of January, 2016.
 City Engineer, City of Muscle Shoals, Alabama

ACKNOWLEDGMENT
 I, Angie Williams, a duly qualified Surveyor in the State of Alabama, do hereby certify that I have surveyed the property of PLANTATION POINTE SUBDIVISION PHASE II, located in Colbert County, Alabama, and that the survey and plat shown hereon are true and correct in accordance with the laws of the State of Alabama, and that the same have been approved by the City of Muscle Shoals in accordance with all applicable provisions of the City of Muscle Shoals Code.
 This on the 15th day of January, 2016.
 Angie Williams, Surveyor

PLANTATION POINTE LLC
 I, Robert Eaton, as the duly qualified owner of the property shown hereon, do hereby certify that I have approved the subdivision map and plat shown hereon, and that the same have been approved by the City of Muscle Shoals in accordance with all applicable provisions of the City of Muscle Shoals Code.
 This on the 15th day of January, 2016.
 Robert Eaton, Owner

CERTIFICATE OF APPROVAL OF THE CITY ENGINEER
 I hereby certify that the subdivision map for PLANTATION POINTE SUBDIVISION PHASE II, or that a preliminary plat of the subdivision of the same, has been approved by the City of Muscle Shoals in accordance with all applicable provisions of the City of Muscle Shoals Code.
 This on the 15th day of January, 2016.
 City Engineer, City of Muscle Shoals, Alabama

CERTIFICATE OF APPROVAL OF THE COUNTY ENGINEER
 I hereby certify that the subdivision map for PLANTATION POINTE SUBDIVISION PHASE II, or that a preliminary plat of the subdivision of the same, has been approved by the County Engineer, County of Colbert, Alabama, in accordance with all applicable provisions of the Alabama Code.
 This on the 15th day of January, 2016.
 County Engineer, County of Colbert, Alabama

CERTIFICATE OF APPROVAL FOR THE RECORDS
 I hereby certify that the subdivision map for PLANTATION POINTE SUBDIVISION PHASE II, or that a preliminary plat of the subdivision of the same, has been approved by the County Engineer, County of Colbert, Alabama, in accordance with all applicable provisions of the Alabama Code.
 This on the 15th day of January, 2016.
 County Engineer, County of Colbert, Alabama

HAYS SURVEYING
 ROY A. HAYS, P.E.
 210 EAST 17TH STREET
 MUSCLE SHOALS, ALABAMA 35668
 PHONE: 205-336-1111
 FAX: 205-336-1112

HAYS SURVEYING
 ROY A. HAYS, P.E.
 210 EAST 17TH STREET
 MUSCLE SHOALS, ALABAMA 35668
 PHONE: 205-336-1111
 FAX: 205-336-1112