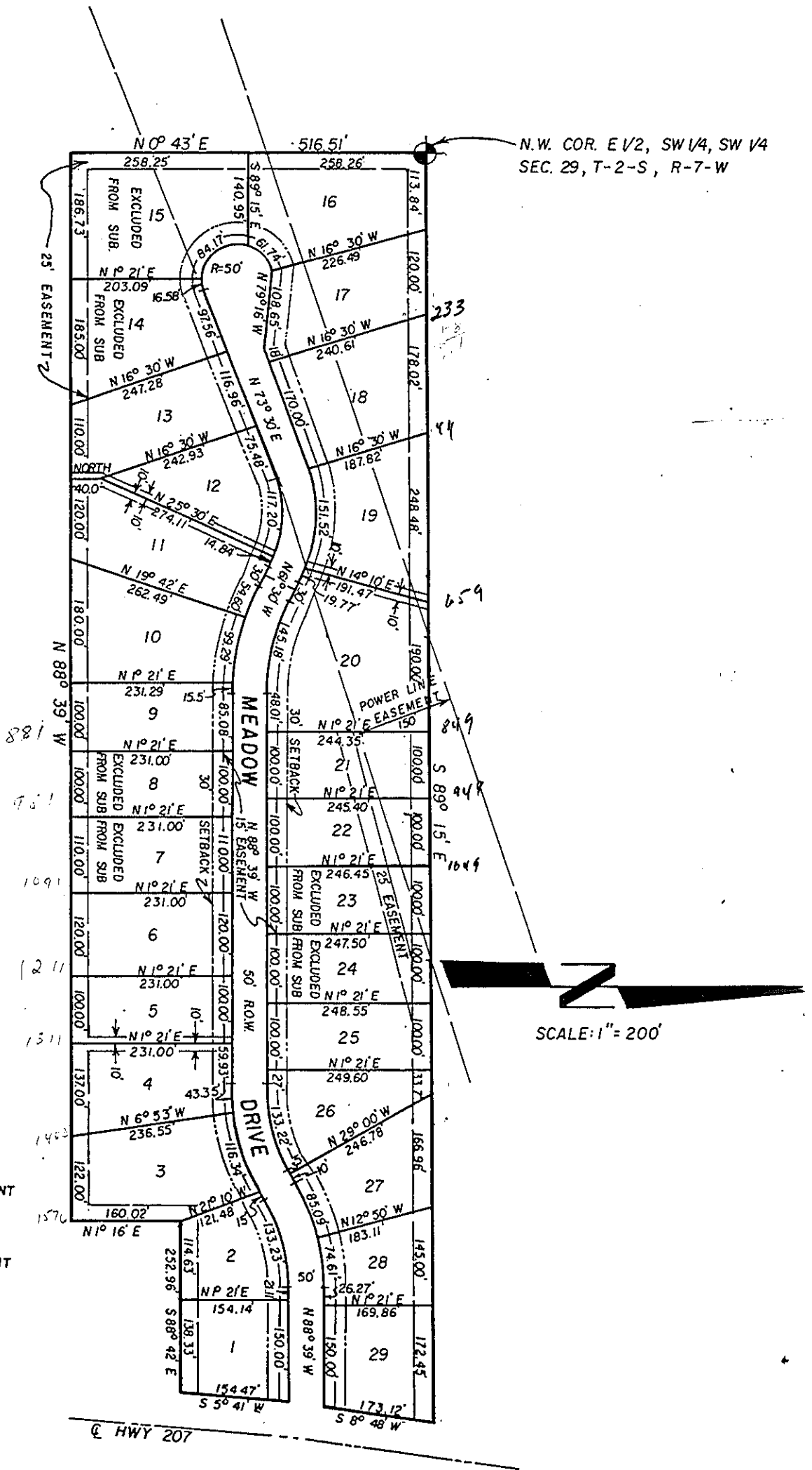


ROGERSVILLE

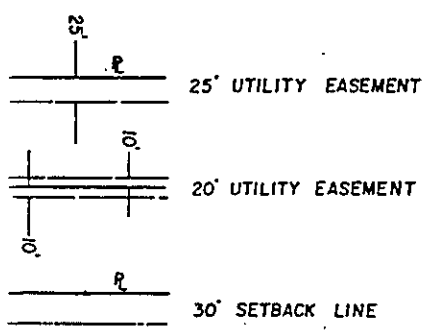
HEIGHTS



N.W. COR. E 1/2, SW 1/4, SW 1/4 SEC. 29, T-2-S, R-7-W

SCALE: 1" = 200'

LEGEND



Plat showing, at reduced scale, ROGERSVILLE HEIGHTS, according to the plat thereof recorded in the Office of the Judge of Probate of Lauderdale County, Alabama, in Plat Book 5, Page 54.

ROGERSVILLE HEIGHTS  
PART OF THE S.W.1/4 OF SEC.29,  
T-2-S, R-7-W.  
Lauderdale County, Alabama

STATE OF ALABAMA  
COUNTY OF LAUDERDALE

I, S.K.Alexander, a Registered Land Surveyor, hereby certify that I have surveyed that tract of land designated as "ROGERSVILLE HEIGHTS" situated in part of the Southwest 1/4 of Section 29, T-2-S, R-7-W, Lauderdale County, Alabama, that I have subdivided said tract of land into Lots giving the bearing and length of each lot line and have shown the Streets and Easements therein, giving the bearing, length and width of each; that the annexed plat is a true and correct plat of said subdivision, and shows the correct relationship to the U.S. Government survey of Public Lands in the State of Alabama.

S.K.Alexander, (Seal)

S.K.Alexander, Registered Land Surveyor  
Ala. Certificate No. 2268

STATE OF ALABAMA  
COUNTY OF LAUDERDALE

I, Sara S. Alexander, a Notary Public for said State and County, hereby certify that S.K.Alexander, a Registered Land Surveyor in the State of Alabama, whose name is signed to the foregoing instrument and who is known to me, acknowledged on this date that being informed of the contents of said instrument, executed the same voluntarily on the day the same bears date.

Sara S.Alexander

Notary Public

STATE OF ALABAMA  
COUNTY OF LAUDERDALE

We, the undersigned, Albert McConnell Builders, Incorporated, a corporation, owner of the property shown hereon and designated as "ROGERSVILLE HEIGHTS" accept and expressly adopt said plat as an official record of same, and in consideration of the respective benefits to accrue to us, our successors and assigns, do hereby grant and convey to the City of Florence, Alabama, its successors and assigns, an easement or right of way over, under, across and above the Streets and Public roads and alleys shown hereon for electric, telephone, water, gas and sewer lines and also for such purposes rights-of-way ten feet wide on either side of each side and rear lot line and other rights-of-way as shown, with the right of ingress and egress, conveying the privileges necessary for the installation and maintenance of such utilities over the respective right-of-way including the right to cut and clear trees or parts thereof or other objects that may injure or endanger overhead lines, where a dwelling site is composed of several Lots or part of a lot or parts of several Lots, where the Phrase "side lot line" is used herein, the same shall be construed to mean the property ownership line, unless the utility easement or easements along said lot line has been utilized by the City of Florence Utility Departments.

Given under our hands at Florence, Alabama, this the 26th day of July, 197

ALBERT McCONNELL BUILDERS, INC. a  
Corporation

Attest: Freddie McConnell  
Its Secretary

By Albert McConnell  
Its President

STATE OF ALABAMA  
COUNTY OF LAUDERDALE

I, Sara S. Alexander, a Notary Public in and for said State and County, hereby certify that Albert McConnell whose name as President of Albert McConnell Builders, Inc., a corporation, owner of the property

(NEXT PAGE)

Page # 2, continued.

subdivided hereon, is signed to the foregoing instrument and who is known to me, acknowledged before me on this day that being informed of the contents of this instrument, he as such officer and with full authority, executed the same voluntarily for and as the act of said Corporation.

Given under my hand and official seal, this the 26th day of July, 1979

Sara S. Alexander  
Notary Public

STATE OF ALABAMA  
LAUDERDALE COUNTY

Approved by the Lauderdale County Health Department, this the 17th day of August, 1979.

Jacky L. Haynes  
Health Officer

STATE OF ALABAMA  
LAUDERDALE COUNTY

Approved by the Alabama State Highway Department, this the 17 day of August, 1979.

B.H. Allen  
District Engineer

STATE OF ALABAMA  
COUNTY OF LAUDERDALE

Approved by the Rogersville Waterworks and Sewer Board, this the 26 day of July 1979.

Chas. H. (illegible)  
Chairman

STATE OF ALABAMA  
COUNTY OF LAUDERDALE

I, William B. Duncan, Probate Judge of Lauderdale County, Alabama, hereby certify that the annexed plat of "ROGERSVILLE HEIGHTS" was filed in this office for recording and was duly recorded in Plat Book 5, on Page 54. This the 17 day of August, 1979.

William B. Duncan  
Probate Judge