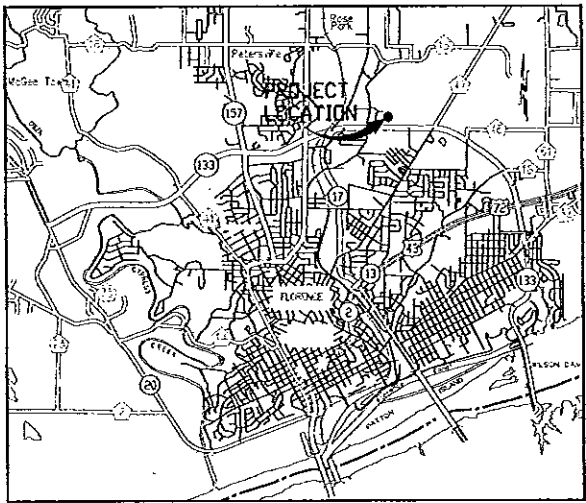
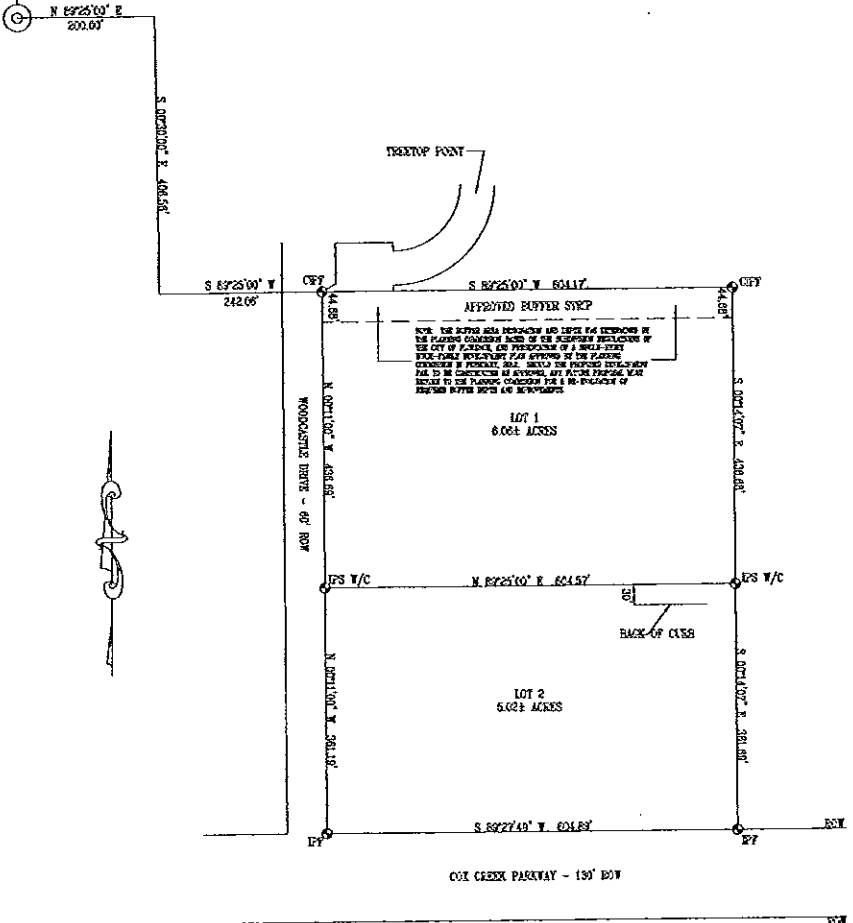


THE TIMBERS

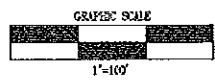
PART OF THE WEST 1/2 OF THE SOUTHWEST 1/4
SECTION 25, TOWNSHIP 2 SOUTH, RANGE 11 WEST

237

NORTHWEST CORNER OF THE SOUTHWEST 1/4
OF THE SOUTHWEST 1/4, SECTION 25,
TOWNSHIP 2 SOUTH, RANGE 11 WEST



VICINITY MAP



STATE OF ALABAMA
LAUREL COUNTY
APPROVED FOR RECORDING BY THE CITY ENGINEER, CITY OF FLORENCE, ALABAMA.
THIS THE 20th DAY OF March, 2012.
[Signature]
WILLIAM B. JAMESON, II
CITY ENGINEER
CITY OF FLORENCE, ALABAMA

STATE OF ALABAMA
LAUREL COUNTY
APPROVED FOR RECORDING BY THE COUNTY ENGINEER, LAUREL COUNTY, ALABAMA.
THIS THE 22nd DAY OF May, 2012.
[Signature]
BRYAN M. JONES
COUNTY ENGINEER
LAUREL COUNTY, ALABAMA

STATE OF ALABAMA
LAUREL COUNTY
I, DEBBIE B. WERNER, REGISTRAR CLERK, LAUREL COUNTY, ALABAMA, HEREBY CERTIFY THAT THE
ATTACHED PART OF "PLANNING COMMISSION RESOLUTION REGARDING" HAS BEEN FILED IN THE OFFICE
OF THE CLERK OF RECORDS OF LAUREL COUNTY, ALABAMA, IN PLAT BOOK _____, PAGE 237.
THIS THE 22nd DAY OF May, 2012.
[Signature]
DEBBIE B. WERNER
REGISTRAR CLERK
LAUREL COUNTY, ALABAMA

STATE OF ALABAMA
LAUREL COUNTY
I, RONNIE E. YOUNG, A REGISTERED LAND SURVEYOR IN SAID STATE, DO HEREBY CERTIFY
THAT I HAVE SURVEYED THE PROPERTY SHOWN AND DESCRIBED IN THIS PLAT
AND THAT THE SAID PLAT IS CORRECT IN ACCORDANCE WITH THE REQUIREMENTS OF THE
LAUREL COUNTY, ALABAMA. I HAVE SURVEYED SAID PLAT SUBJECT TO THE EXISTING
EASEMENTS, RIGHTS, INTERESTS AND LIENS AS WELL AS THE SUBDIVISION
PLAT. I FURTHER CERTIFY THAT THE SAID PLAT IS A TRUE AND CORRECT PLAT OF SAID
SUBDIVISION AND SHOWS THE TRUE RELATIONSHIP TO THE U. S. GOVERNMENT SURVEY OF
PUBLIC LANDS IN THE STATE OF ALABAMA.
I HEREBY STATE THAT ALL PARTS OF THIS SURVEY AND DRAWING HAVE BEEN COMPLETED IN
ACCORDANCE WITH THE REQUIREMENTS OF THE MINIMUM TECHNICAL STANDARDS FOR THE PRACTICE
OF LAND SURVEYING IN THE STATE OF ALABAMA.
GIVEN UNDER MY HAND AND SEAL, THIS THE 18TH DAY OF MARCH, 2012.
[Signature]
RONNIE E. YOUNG
REGISTERED LAND SURVEYOR
EX. No. 12874

STATE OF ALABAMA
LAUREL COUNTY
I, WALK GLOVER, AS MEMBER OF SOUTHERN PROPERTIES, LLC, HEREBY PLATED IN THE ANNEXED PLAT AND ASSUMED
AS THE TRUSTEE TO HEREBY ACCEPT AND EXPRESSLY ASSUME AS THE OFFICIAL EXPRESS OF SAID AND IN
CONSIDERATION OF THE EXPRESSIVE TRUSTS TO REWARD TO US OUR SUCCESSORS AND ASSIGNS, TO HEREBY GRANT
AND CONVEY TO THE CITY OF FLORENCE, ALABAMA, THE COUNTY OF LAUREL COUNTY, ITS SUCCESSORS AND ASSIGNS,
THE RIGHTS AND INTERESTS THAT THE TRUSTEES, SUBJECT MATTER, CAN AND SHALL LEASE, TO THE CITY OF FLORENCE AND
ASSIGNS, TO BE CONVEYED TO THE CITY OF FLORENCE, ALABAMA, IN THE EXERCISE OF THE RIGHTS OF THE TRUSTEES OVER THE
RESPECTIVE EASEMENTS, INCLUDING THE RIGHT TO CUT AND CLEAR TREES OR PLANTS THEREBY OR OTHER OBSTACLES
THAT MAY EXIST OR BEACOME WITHIN THE LOTS.
GIVEN UNDER MY HAND THIS 15th DAY OF March, 2012.
[Signature]
WALK GLOVER
MEMBER OF SOUTHERN PROPERTIES, LLC.

STATE OF ALABAMA
LAUREL COUNTY
I, THE UNDERSIGNED, A NOTARY PUBLIC IN SAID STATE AND COUNTY, HEREBY CERTIFY THAT WALK GLOVER, AS MEMBER
OF SOUTHERN PROPERTIES, LLC, HAS BEEN SEEN BY ME IN THE PRESENCE OF SAID PLAT AND THAT I AM AWARE
OF THE FACTS THAT HAVE BECOME OF THE CONTENTS OF SAID PLAT, DESCRIBED THE SAME FULLY AND TRULY ON THE DAY THE
SAME BECAME DUE.
GIVEN UNDER MY HAND AND SEAL, THIS THE 15th DAY OF March, 2012.
[Signature]
NOTARY PUBLIC
JAN PAUL HOLT
MY COMMISSION EXPIRES JAN. 24, 2018

CERTIFICATE FOR APPROVAL BY THE CITY BOARD
STATE OF ALABAMA
LAUREL COUNTY
THE UNDERSIGNED AS ATTORNEY BY THE LAUREL COUNTY, ALABAMA CITY BOARD
HEREBY APPROVE THE TERMS AND CONDITIONS OF THE SALE IN THE
PROBATE OFFICE OF LAUREL COUNTY, ALABAMA.
THIS THE 21st DAY OF May, 2012.
[Signature]
CITY CLERK

CERTIFICATE OF APPROVAL BY THE LAUREL COUNTY FLOOD MANAGEMENT DEPARTMENT
STATE OF ALABAMA
LAUREL COUNTY
THE UNDERSIGNED AS ATTORNEY BY THE LAUREL COUNTY, ALABAMA FLOOD MANAGEMENT DEPARTMENT,
HEREBY APPROVE THE TERMS AND CONDITIONS OF THE SALE IN THE PROBATE OFFICE OF LAUREL COUNTY,
ALABAMA.
THIS THE _____ DAY OF _____, 2012.
[Signature]
LAUREL COUNTY FLOOD MANAGEMENT DEPARTMENT

STATE OF ALABAMA
LAUREL COUNTY
APPROVED FOR RECORDING BY THE PLANNING COMMISSION, CITY OF FLORENCE, ALABAMA.
THIS THE 22nd DAY OF May, 2012.
[Signature]
PLANNING COMMISSION

THIS SURVEY IS INTENDED FOR THE SALE PURPOSE AND USE BY THE PERSON NAMED HEREON AND IS NOT TRANSMISSIBLE.

LEGEND

• SHEET	○ CITY COUNCIL MEETING	□ 1/4 SECTION	△ EASEMENT	- - - OPENED EASEMENT
• POINT ON SECTION	○ BY THE CITY	□ 1/2 SECTION	△ EASEMENT	- - - EASE OF WAY
• POINT ON SECTION	○ BY THE COUNTY	□ 3/4 SECTION	△ EASEMENT	- - - ROAD RECORDING
• POINT	○ BY THE STATE	□ SECTION	△ EASEMENT	- - - EASEMENT
• POINT	○ BY THE COUNTY	□ TOWNSHIP	△ EASEMENT	- - - EASEMENT
• POINT	○ BY THE STATE	□ RANGE	△ EASEMENT	- - - EASEMENT
• POINT	○ BY THE COUNTY	□ STATE	△ EASEMENT	- - - EASEMENT
• POINT	○ BY THE STATE	□ FEDERAL	△ EASEMENT	- - - EASEMENT
• POINT	○ BY THE COUNTY	□ NATIONAL	△ EASEMENT	- - - EASEMENT
• POINT	○ BY THE STATE	□ INTERNATIONAL	△ EASEMENT	- - - EASEMENT

DON C. FRANK, JR.	FENCE & REBER ENGINEERING, INC.	REANCE WIGANTON
DATE: DECEMBER 16, 2011	222 WEST TENNESSEE STREET	JOB NUMBER: 11-024
BASIS OF INFORMATION: LEED	PHONE: (256) 766-6974	DRAWN BY: RW, W.