

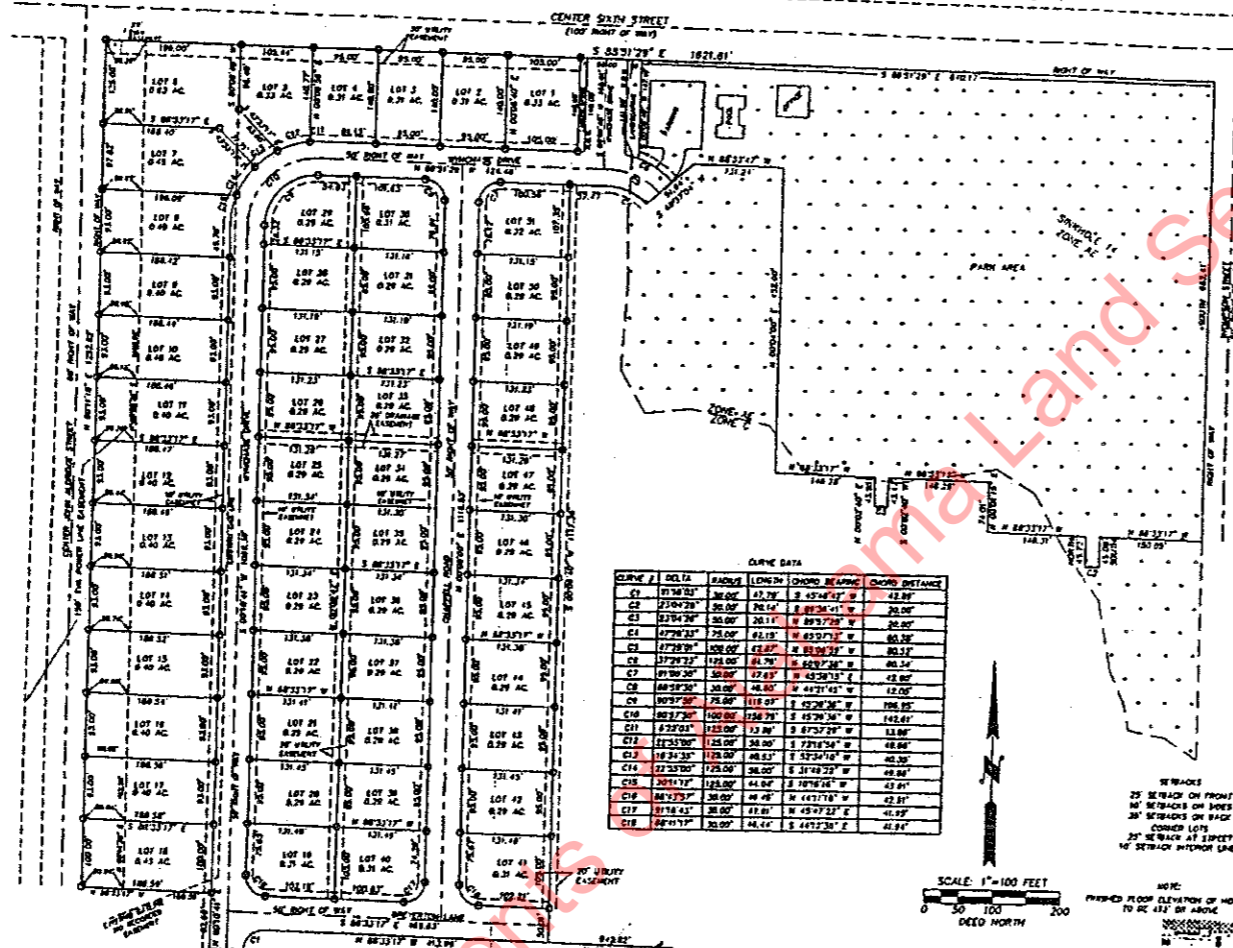
200626902 (255Dx4200x2.tiff)

2006 26 - 902

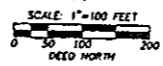
107224  
192671

4900

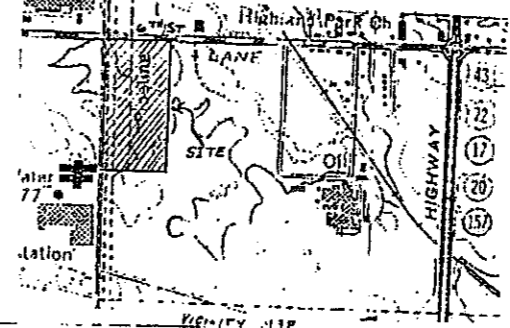
FINAL PLAT OF WYNCHASE SUBDIVISION PHASE I,  
LOCATED IN SECTION 10, T-4-S, R-11-W,  
WYNCHASE, LLC - OWNER  
ROBERT EATON - DEVELOPER  
COLBERT COUNTY, ALABAMA  
ZONE R-3



CURVE #	DELTA	RADIUS	LENGTH	CHORD BEARING	CHORD DISTANCE
C1	91°40'21"	36.00'	43.79'	S 45°24'17" W	42.89'
C2	27°04'20"	36.00'	76.14'	S 89°34'41" W	30.00'
C3	27°04'20"	36.00'	76.14'	S 89°34'41" W	30.00'
C4	27°04'20"	36.00'	76.14'	S 89°34'41" W	30.00'
C5	27°04'20"	36.00'	76.14'	S 89°34'41" W	30.00'
C6	27°04'20"	36.00'	76.14'	S 89°34'41" W	30.00'
C7	27°04'20"	36.00'	76.14'	S 89°34'41" W	30.00'
C8	27°04'20"	36.00'	76.14'	S 89°34'41" W	30.00'
C9	27°04'20"	36.00'	76.14'	S 89°34'41" W	30.00'
C10	27°04'20"	36.00'	76.14'	S 89°34'41" W	30.00'
C11	27°04'20"	36.00'	76.14'	S 89°34'41" W	30.00'
C12	27°04'20"	36.00'	76.14'	S 89°34'41" W	30.00'
C13	27°04'20"	36.00'	76.14'	S 89°34'41" W	30.00'
C14	27°04'20"	36.00'	76.14'	S 89°34'41" W	30.00'
C15	27°04'20"	36.00'	76.14'	S 89°34'41" W	30.00'
C16	27°04'20"	36.00'	76.14'	S 89°34'41" W	30.00'
C17	27°04'20"	36.00'	76.14'	S 89°34'41" W	30.00'
C18	27°04'20"	36.00'	76.14'	S 89°34'41" W	30.00'



NOTES:  
25 SETBACK ON FRONT  
10 SETBACKS ON SIDES  
25 SETBACKS ON BACK  
CORNER LOT  
25 SETBACK AT INTERSECT  
10 SETBACK AT INTERSECT



STATE OF ALABAMA  
COUNTY OF COLBERT  
I, Bert A. Hays, a registered Surveyor of Alabama, hereby certify that I have surveyed the property of WYNCHASE SUBDIVISION PHASE I, situated in Colbert County, Alabama, and that the plat of said subdivision herein is in true and correct conformity with the subdivision laws and the number and bearing of the streets, alleys, and public grounds and show thereon the location and name of all lots, and show further thereon the location of the land as depicted on the Original Survey and that permanent monuments have been placed at points marked thereon as shown.

2006 26 902

I HEREBY CERTIFY THAT ALL PARTS OF THIS SURVEY AND DRAWING HAVE BEEN COMPLETED IN ACCORDANCE WITH THE CURRENT REQUIREMENTS OF THE STANDARDS OF PRACTICE FOR SURVEYING IN THE STATE OF ALABAMA TO THE BEST OF MY KNOWLEDGE, INFORMATION AND BELIEF.  
WITNESS MY HAND AND SEAL THE 15th day of JUNE, 2006.



STATE OF ALABAMA  
COUNTY OF COLBERT  
I, Robert Eaton, owner of the property shown on the attached plat and designed as WYNCHASE SUBDIVISION PHASE I, do hereby grant and convey unto the City of Muscle Shoals, Alabama, the easement and right of way for the use of the City of Muscle Shoals, Alabama, the easement and right of way for the use of the City of Muscle Shoals, Alabama, with the right of ingress and egress, the easement and right of way for the use of the City of Muscle Shoals, Alabama, and the right to use and other uses of parts thereof or other objects that may hereafter be required.

STATE OF ALABAMA  
COUNTY OF COLBERT  
I, Robert Eaton, a Mayor Public in and for said County, in said State, hereby certify that Robert Eaton, whose name is signed to the foregoing instrument, and who is named in the same instrument, is the person who is the owner of the contents of the instrument, executed the same voluntarily.

STATE OF ALABAMA  
COUNTY OF COLBERT  
I, under oath as County Engineer of Colbert County, Alabama, hereby approve the same and for the recording of same in the Public Office of Colbert County, Alabama, this 17th day of July, 2006.

STATE OF ALABAMA  
COUNTY OF COLBERT  
I, under oath as City Engineer of Muscle Shoals, Alabama, hereby approve the same and for the recording of same in the Public Office of Colbert County, Alabama, this 17th day of July, 2006.

STATE OF ALABAMA  
COUNTY OF COLBERT  
I, under oath as City Engineer of Muscle Shoals, Alabama, hereby approve the same and for the recording of same in the Public Office of Colbert County, Alabama, this 17th day of July, 2006.

STATE OF ALABAMA  
COUNTY OF COLBERT  
I, under oath as City Engineer of Muscle Shoals, Alabama, hereby approve the same and for the recording of same in the Public Office of Colbert County, Alabama, this 17th day of July, 2006.

STATE OF ALABAMA  
COUNTY OF COLBERT  
Approved for recording by the Muscle Shoals Building Department on this 17th day of July, 2006.  
Judy Hovestadt  
Building Department

STATE OF ALABAMA  
COUNTY OF COLBERT  
Approved for recording by the Muscle Shoals Water and Sewer Department on this 31st day of July, 2006.  
Shad Flagg  
Water and Sewer Department

STATE OF ALABAMA  
COUNTY OF COLBERT  
Approved for recording by the Muscle Shoals Electric Board on this 31st day of July, 2006.  
Dicky Thomas  
Electric Board

2006 26 902

WYNCHASE SUBDIVISION PHASE I

**HAYS SURVEYING**

BERT A. HAYS, PLS  
1901 EAST 17TH ST.  
SHEFFIELD, ALABAMA 35680  
PHONE: (256) 283-2228

CLIENT: ROBERT EATON

SCALE: 1" = 100'  
DATE: 6/15/06  
DRAWN: BH  
REVISOR: 07/17/06  
CHECKED: BAH  
JOB NO: WYNPH1A1

2006 26 902  
2006 26 902  
2006 26 902

2006 26 902  
2006 26 902  
2006 26 902

2006 26 902  
2006 26 902  
2006 26 902

August 1, 2006  
10:54 AM  
Cabinet C  
Site 124  
Robert Eaton  
Architectural  
107224  
192671