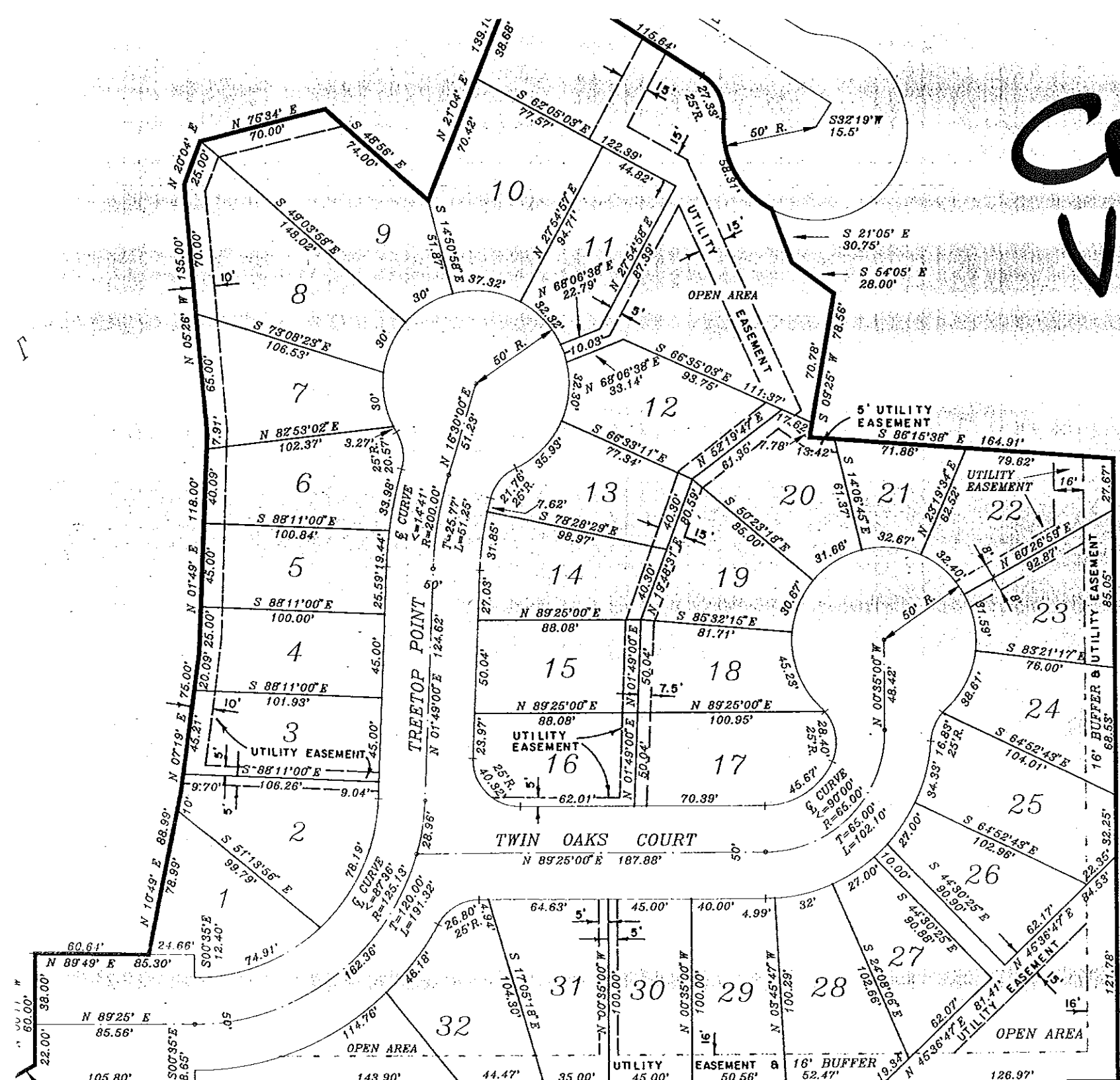


Creekwood Village 6-140



STATE OF ALABAMA
COUNTY OF LAUDERDALE

We, FIRST FEDERAL SAVINGS AND LOAN ASSOCIATION OF FLORENCE, as holder of the mortgage joins in and consents to the subdivision and easements as shown on and designated as "CREEKWOOD VILLAGE", except the plat as official record of same.