

7-95

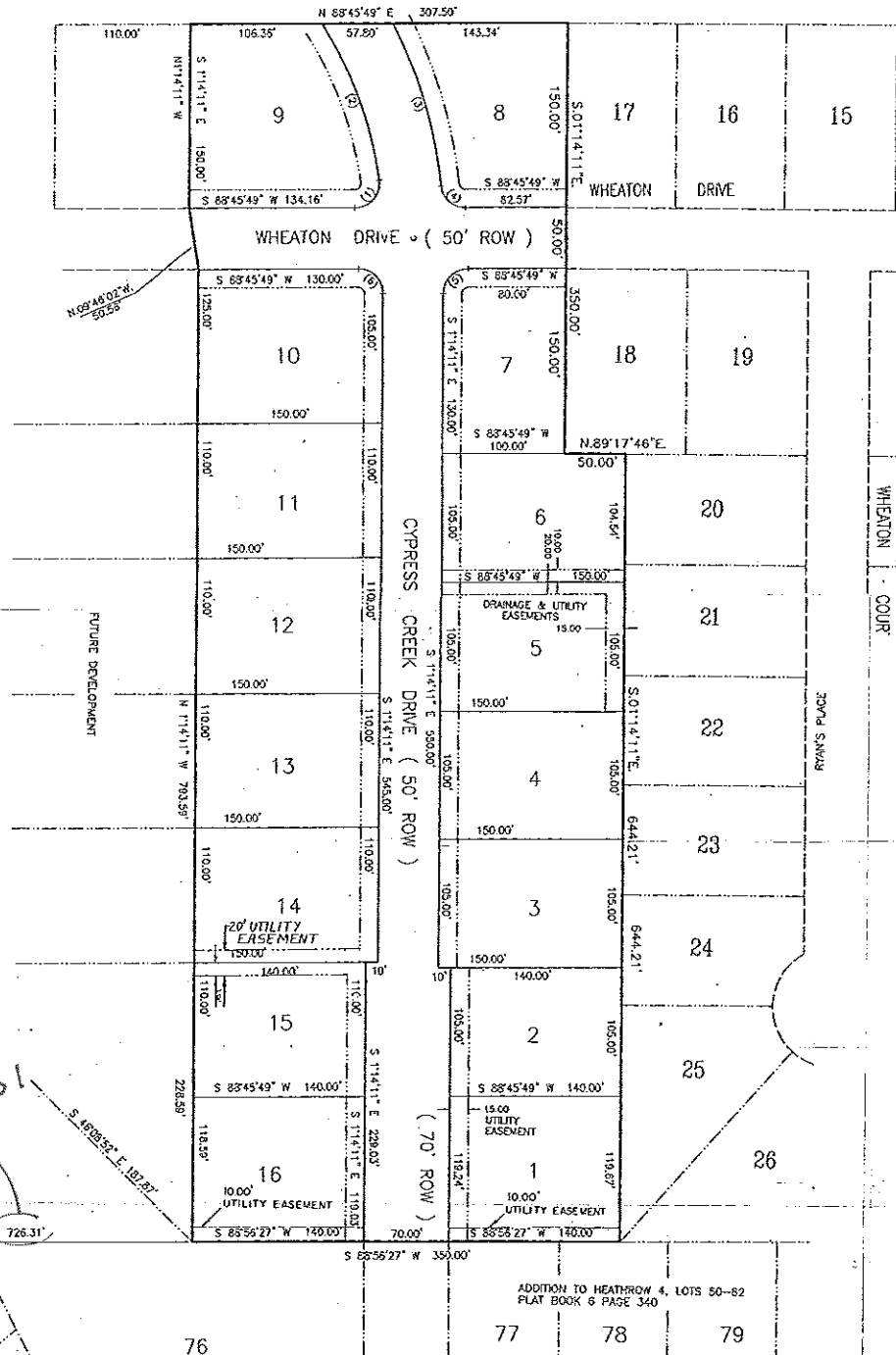
CURVE TABLE

TA.	ARC	TANGENT	CHORD	CHORD BEARING
49°	34.35'	23.20'	30.30'	S 39°31'17" W
16°	135.57'	62.35'	135.67'	S 21°46'05" E
30°	139.05'	70.44'	138.45'	S 10°24'53" E
30°	23.13'	17.24'	28.62'	N 42°50'26" W
30°	31.42'	20.00'	28.28'	N 43°45'49" E
30°	31.42'	20.00'	28.28'	S 45°14'11" E

CYPRESS CREEK MANOR PHASE I

FLORENCE, ALABAMA

DEVELOPER CYPRESS CREEK MANOR LLC



STATE OF ALABAMA
COUNTY OF LAUDERDALE

I, Bry Riser, a registered land surveyor in said State and County, hereby certify that I have surveyed that certain tract of land designated as CYPRESS CREEK MANOR PHASE I, on the annexed plat I have subdivided said lots showing the easements therein, giving the bearings and lengths of each line, as well as the size of the tract. I further certify that the annexed plat is a true and correct plat of said subdivision and shows the proper relationship to the U.S. Government Survey of Public Lands in the State of Alabama.

I hereby certify that all parts of this survey and drawing have been completed in accordance with the current requirements of the Standards of Practice for Surveying in the State of Alabama to the best of my knowledge, information and belief.

Given under my hand and seal, this the 22nd day of May, 2005.



STATE OF ALABAMA
COUNTY OF LAUDERDALE

I, Darrell Rumble, Member of Cypress Creek Manor LLC owner the property platted on the annexed plat and designated as CYPRESS CREEK MANOR PHASE I, do hereby accept and expressly adopt said plat as the official record of same, and in consideration of the respective benefits to occur to us, our successors, and assigns, do hereby grant and convey to the City of Florence, Alabama, the County of Lauderdale its successors and assigns, the easements shown hereon for electric, telephone, water, gas and sewer lines, and also ingress and egress, conveying the privileges necessary for the installation and maintenance of such utilities over the respective easements, including the right to cut and clear trees or parts thereof or other objects that may injure or endanger utility lines.

Given under my hand and seal this the 20th day of June, 2005.

[Signature]
Darrell Rumble Member Cypress Creek Manor LLC

STATE OF ALABAMA
COUNTY OF LAUDERDALE

I, the undersigned, a notary public in said State and County, hereby certify that Darrell Rumble, whose name is signed to the foregoing plat and who is known by me, acknowledged on this date that being informed of the contents of said plat, executed the same voluntarily on the day the same bears date.

Given under my hand and seal this the 20th day of June, 2005.

[Signature]
Notary Public

STATE OF ALABAMA
COUNTY OF LAUDERDALE

Approved for recording by the City Engineer, City of Florence, Alabama. This the 8th day of June, 2005.

[Signature]
City Engineer City of Florence, AL

STATE OF ALABAMA
COUNTY OF LAUDERDALE

Approved for recording by the Planning Commission, City of Florence, Alabama. This the 13th day of June, 2005.

[Signature]
Chairman Planning Commission

STATE OF ALABAMA
COUNTY OF LAUDERDALE

Approved for recording by the County Engineer, County of Lauderdale, Alabama. This the 15th day of June, 2005.

[Signature]
County Engineer, Lauderdale County, AL

STATE OF ALABAMA
COUNTY OF LAUDERDALE

I, Dewey Mitchell, Probate Judge, Lauderdale County, Alabama, hereby certify that the attached plat of CYPRESS CREEK MANOR PHASE I, was duly filed in the Office of the Judge of Probate of Lauderdale County, Alabama in Plat Book 77, Page 93. This the 15th day of June, 2005.

[Signature]
Dewey Mitchell, Probate Judge, Lauderdale Co., AL

SW CORNER
SET 28, T-2, R-11

1026.31
S 49°05'52" E 102.82'

ADDITION TO HEATHROW 4, LOTS 50-52
PLAT BOOK 6 PAGE 340

76 77 78 79